



ELECTRONIC HOOK SWITCH (EHS) SOLUTIONS FOR YEALINK



# SUPPORTED YEALINK IP PHONES



T26P



T28 + EXP39



T28P  
T386 SIP



Yealink EHS36 Adapter



Jabra PRO™ 9400 Series

OR



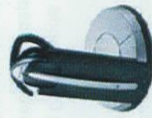
Jabra GO™ 6470

OR



Jabra PRO™ 920

OR



Jabra GN9350e/  
Jabra GN9330e

OR

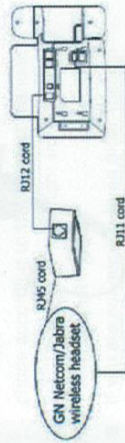


Jabra GN9120 EHS/  
Jabra GN9125

# SET UP INFORMATION

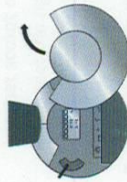
To connect your Yealink phone and Jabra headset with the Yealink-cable, just follow these simple steps:

## SETTING UP THE YEALINK PHONE



## SETTING UP JABRA GN9350e

1. Open up the cover on the base unit.
2. On the LCD display, navigate to the headset picture.
3. Navigate to the DHSG mode and select it by pressing the OK button.
4. Set Compatibility selector in position "A".



Compatibility selector  
Jabra GN9350e

- Note: If more than 15 seconds elapse without pressing the volume + or volume - button, the last selected interface will be activated.
4. Set the base unit to the DHSG mode.
  5. To set the EHS mode, press the Telephone button on the Base for 6 seconds until the 4 battery indicators flash once. Now wait 5 seconds and the headset is initialized.
  6. Set Compatibility selector in position "A".

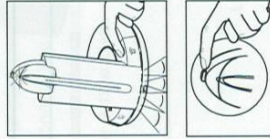
Setting up Jabra PRO™ 9400 and Jabra GO™ 6470 - follow the guide on page 31.

## SETTING UP JABRA PRO™ 920

1. Connect the Jabra LINK™ adapter as shown in adapter documentation supplied with the Jabra LINK™. On some phones the telephone cable will also need to be connected.
2. Call your connected desk phone using another phone to enable the Jabra LINK™ adapter. Wait 10 seconds before answering.
3. Set a clear dial tone. Locate the clear dial tone switch on the back of the Jabra PRO 920 base and rotate to "A".
4. Set the Microphone volume. Make a call to test your speaking volume. The listener should not adjust their own volume. You may adjust your microphone speaking volume using the + / - volume buttons.

## SETTING UP JABRA GN9330e

1. Place the headset in the base with its indicators facing you.
2. Press the Telephone button on the Base for 6 seconds while the headset is in the base until the headset's blue LED is flashing rapidly.
3. Use the volume up/down button to shift between the different EHS settings - see table below.



The base unit's 4 battery indicators show which EHS mode the Jabra GN9330e is in.

GN RHL (Default)	■	□	□	□
DHSG	■	■	□	□
AEI	■	■	■	□
MSH	■	■	■	■

25%	□	□	□	□
100%	■	■	■	■

## SETTING UP JABRA GN9120/ JABRA GN9125

1. Set compatibility selector (Telephone Termination Switch Wheel) in position "A".
2. Set the base unit to the DHSG mode by keeping the headset in the base and hold the volume + / - buttons on the headset for 6 seconds until the red light on the base flashes rapidly.
3. Scroll through the four different settings using + / - and set to the lips icon. Leave for 15 seconds until the unit has displayed the confirmation flash sequence and it is ready to go!

